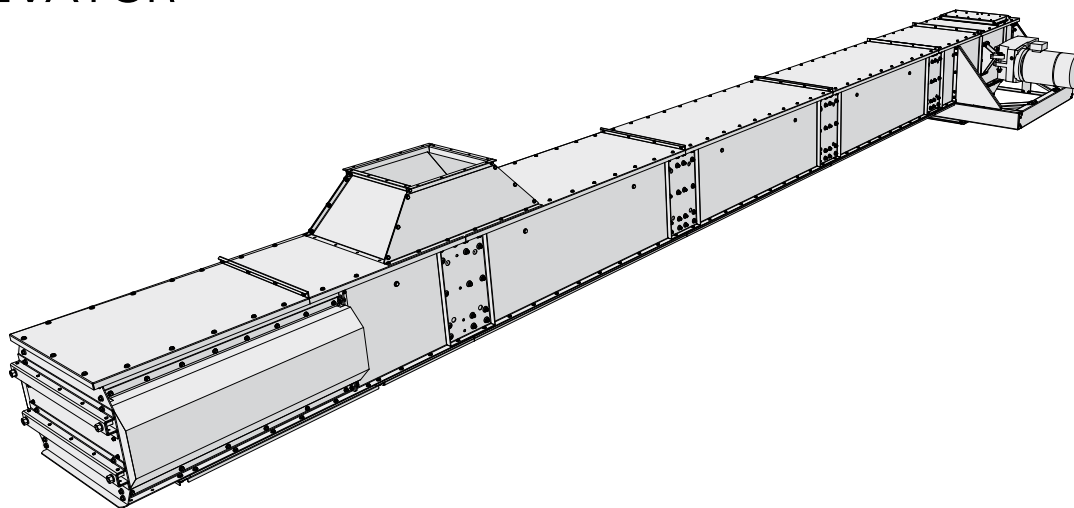




**SKANDIA  
ELEVATOR**



Our machines are designed for outdoor use. We only use galvanized steel plate, and join the parts by means of clamp riveting and bolting in order to keep the surface layer intact. Edges are bent down, joints and seams overlap and many parts are embossed in order to prevent water penetration. The most exposed joints are also sealed with rubber strips or silicone. The products in the H-LINE are designed for plants with intense operation all year round.



**KTH**  
50/64-70/64

The top conveyor KTH is adapted in terms of capacity to transport material from a Skandia elevator to storage bins/silos. It can be operated in reverse or constructed as a "flow/return" conveyor.

**STANDARD EQUIPMENT:**

- › Direct-mounted gearbox motor
- › Pop up overloading flap/inspection hatch with safety switch
- › Outlet hopper for the drive
- › Inlet hopper for tail end
- › Chain tensioner with variable end face for extra cleanliness
- › Bottom clean out hatch in tail end
- › Journalled chain return rollers of steel
- › Permanently lubricated bearings
- › Chain and flight of steel with clean-out flight of PE (polyethylene)
- › Plastic wearing surfaces on top of the bottom plate

**ACCESSORIES:**

- › Connections, slides & hoppers
- › Chain guard
- › Chain with return buckets
- › Intermediate section with sight glass on both sides
- › Wire support for up to a 12 metre span

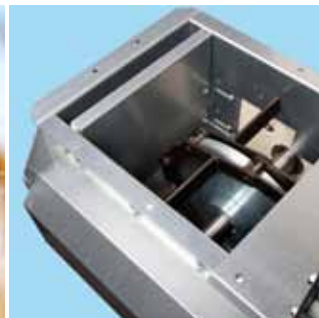


Pop up overloading flap/inspection hatch with safety switch.



Chain and flight of steel with clean-out flight of PE (polyethylene).

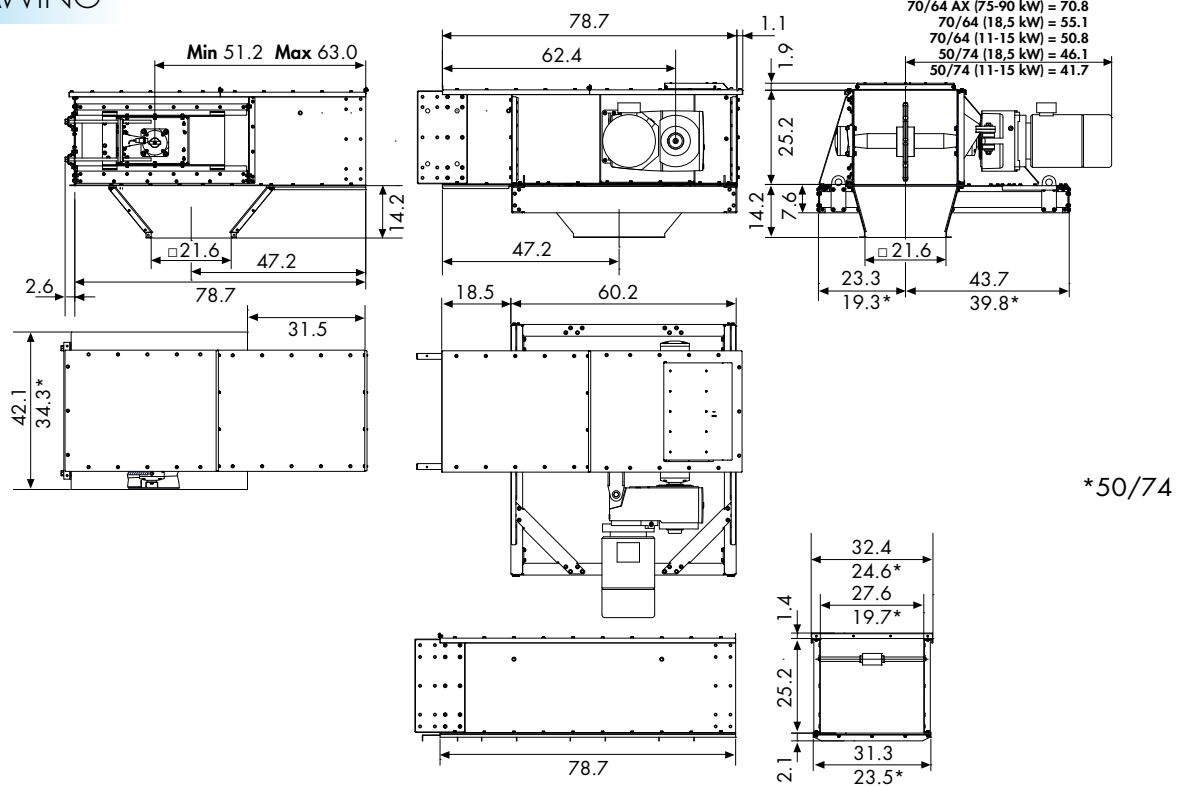
**GALVANISED  
ENERGY EFFICIENT  
SERVICE FRIENDLY  
COMPACT  
RELIABLE  
EASILY MOUNTED**



Variable end face for extra cleanliness.

**THE  
LEADING  
COMPANY**

# KTH DIMENSIONAL DRAWING



All drawings are available in CAD format.

## KTH TOP CONVEYOR

		50/64 400 MTH	70/64 500 MTH	70/64 600 MTH
Capacity for 750 kg/m <sup>3</sup>	MTH	419-472	589-663	614-663
Capacity	M <sup>3</sup> /H	559-629	785-884	819-884
Capacity for 46.8 lb/CF	CFH	19738-22210	27718-31214	28919-31214
Capacity	BPH	15864-17851	22278-25088	23243-25088
Speed	RPM	24-27	24-27	25-27
Chain speed	FPM	126-142	126-142	132-142
Conveyor chain, type			M112-M450	
Pitch/ultimate tensile strength	in/lbf		6.3-7.9/25100-101100	
Chain sprocket, teeth	pcs		10	
Flight, material			Steel	
Intermediate section, width/height	in	19.7/25.2	27.6/25.2	27.6/25.2
Plate thickness drive, side plate/bottom plate	ga		0/12	
Plate thickness tail end/intermediate section, side/bottom plate	ga		9/12	
Thickness, plastic bottom	in		0.4	
Inlet and outlet hoppers, plate thickness/□ dimension	ga/in	9/□19.7	9/□21.7	9/□21.7
ATEX class (standard equipment)			II 2D/OD	

