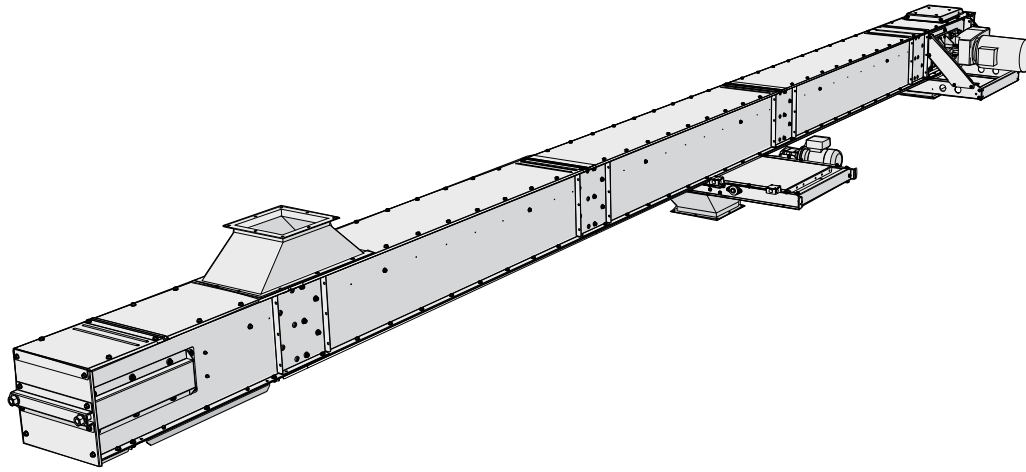




**SKANDIA  
ELEVATOR**



Our machines are designed for outdoor use. We only use galvanized steel plate, and join the parts by means of clamp riveting and bolting in order to keep the surface layer intact. Edges are bent down, joints and seams overlap and many parts are embossed in order to prevent water penetration. The most exposed joints are also sealed with rubber strips or silicone. The products in the I-LINE are designed for plants with continuous operation all year round.



## KTIF

The top conveyor KTIF is adapted in terms of capacity to transport material from a Skandia elevator to storage bins/silos. It can be operated in reverse or constructed as a "flow/return" conveyor.

### STANDARD EQUIPMENT:

- › Direct-mounted gearbox motor with support frame
- › Pop up overloading flap/inspection hatch with safety switch
- › Outlet hopper for the drive
- › Inlet hopper for tail end
- › Chain tensioner with variable end face for extra cleanliness
- › Bottom clean out hatch in tail end
- › Chain return rollers of PA6G (Polyamide Glass Fiber Reinforced)
- › Permanently lubricated bearings
- › Chain and flight of steel with flight casing of PE (polyethylene)

### ACCESSORIES:

- › Weather cover for gearbox motor
- › Connections, hoppers & valves for different needs
- › Transverse or longitudinal outlet slide with brush (manual, electrical or pneumatic)
- › Weather cover for outlet slide
- › Chain guard
- › Chain with return buckets
- › Intermediate section with sight glass on both sides
- › Wire support for up to a 12 meter span



Pop up overloading flap/inspection hatch with safety switch.



Variable end face for extra cleanliness.

**GALVANIZED  
ENERGY EFFICIENT  
SERVICE FRIENDLY  
COMPACT  
RELIABLE  
EASILY MOUNTED**

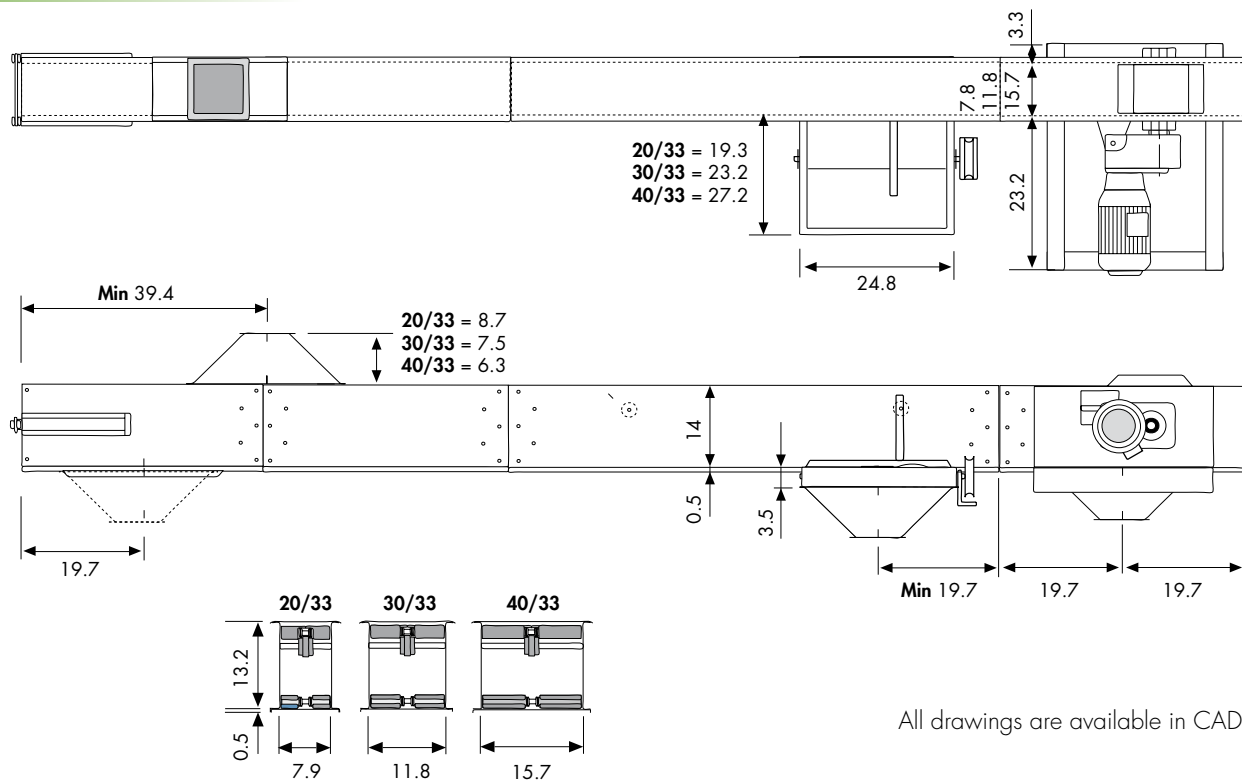


**THE  
LEADING  
COMPANY**



Direct-mounted gearbox motor with support frame.

# KTIF DIMENSIONAL DRAWING



All drawings are available in CAD format.

## KTIF TOP CONVEYOR

			20/33 40 MTH	20/33 60 MTH	30/33 80 MTH	30/33 100 MTH	40/33 120 MTH
Capacity for 750 kg/m <sup>3</sup> (46.8 lb/CF)	MTH		49-54	66-71	89-96	110-117	135-148
Capacity	M <sup>3</sup> /H		65-72	88-95	119-128	147-156	180-197
Capacity	CFH		2295-2542	3107-3354	4201-4520	5190-5508	6356-6956
Capacity	BPH		1845-2043	2497-2696	3377-3633	4172-4427	5108-5591
Speed	RPM		32-35	43-46	38-41	47-50	43-47
Chain speed	FPM		85-93	112-120	100-108	124-132	112-124
Conveyor chain, type					M80		
Pitch/ultimate tensile strength	in/lbf				3.9/17900		
Chain sprocket, teeth	pcs				8		
Flight, material					Steel/Plastic		
Intermediate section, width/height	in		7.9/13.2		11.8/13.2		15.7/13.2
Plate thickness, drive, side plate/bottom plate	ga				6/12		
Plate thickness, tail end/intermediate section, side plate/bottom plate	ga				12/12		
Inlet and outlet hoppers, plate thickness/□ dimension	ga/in		11/□7.1		11/□9.8		11/□11.8
ATEX class (standard equipped)					II 2D/OD		

