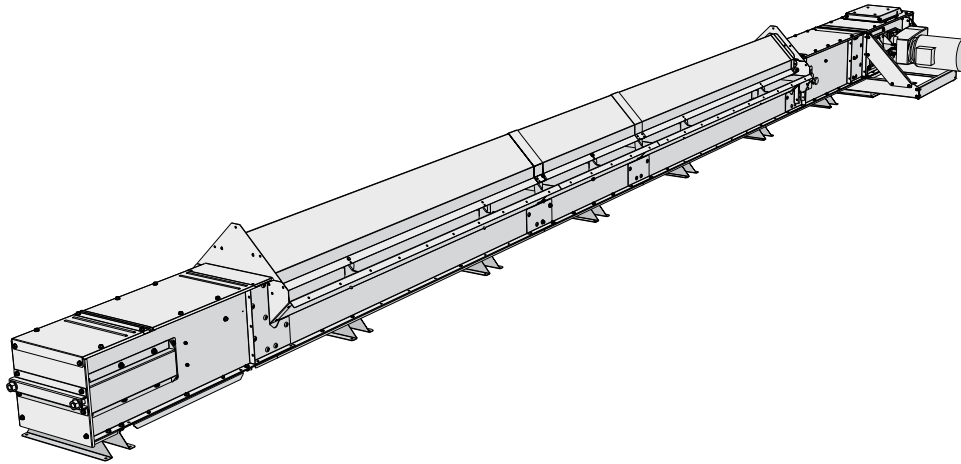




**SKANDIA
ELEVATOR**



Our machines are designed for outdoor use. We only use galvanized steel plate, and join the parts by means of clamp riveting and bolting in order to keep the surface layer intact. Edges are bent down, joints and seams overlap and many parts are embossed in order to prevent water penetration. The most exposed joints are also sealed with rubber strips or silicone. The products in the I-LINE are designed for plants with continuous operation all year round.



KTIFg

The trench intake conveyor KTIFg is adapted in terms of capacity to transport material from a loading trench to a Skandia belt & bucket elevator. The trench intake section is self-regulating, which prevents overfilling.

STANDARD EQUIPMENT:

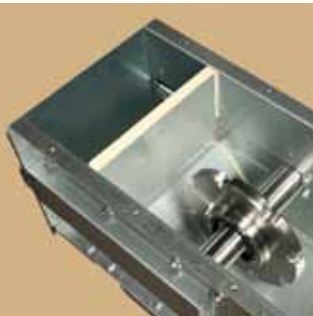
- › Direct-mounted gearbox motor with support frame
- › Pop up overloading flap/inspection hatch with safety switch
- › Outlet hopper for the drive
- › Self-regulating trench intake sections
- › Chain tensioner with variable end face for extra cleanliness
- › Bottom clean out hatch in tail end
- › Chain return rollers of PA6G (Polyamide Glass Fiber Reinforced)
- › Permanently lubricated bearings
- › Chain and flight of steel with flight casing of PE (polyethylene)

ACCESSORIES:

- › Weather cover for gearbox motor
- › Connections, hoppers & valves for different needs
- › Chain guard
- › Intermediate section with sight glass on both sides
- › Capacity slide for fine-grained materials



Direct-mounted gearbox motor with support frame.



Variable end face for extra cleanliness.

**GALVANIZED
ENERGY EFFICIENT
SERVICE FRIENDLY
COMPACT
RELIABLE
EASILY MOUNTED**



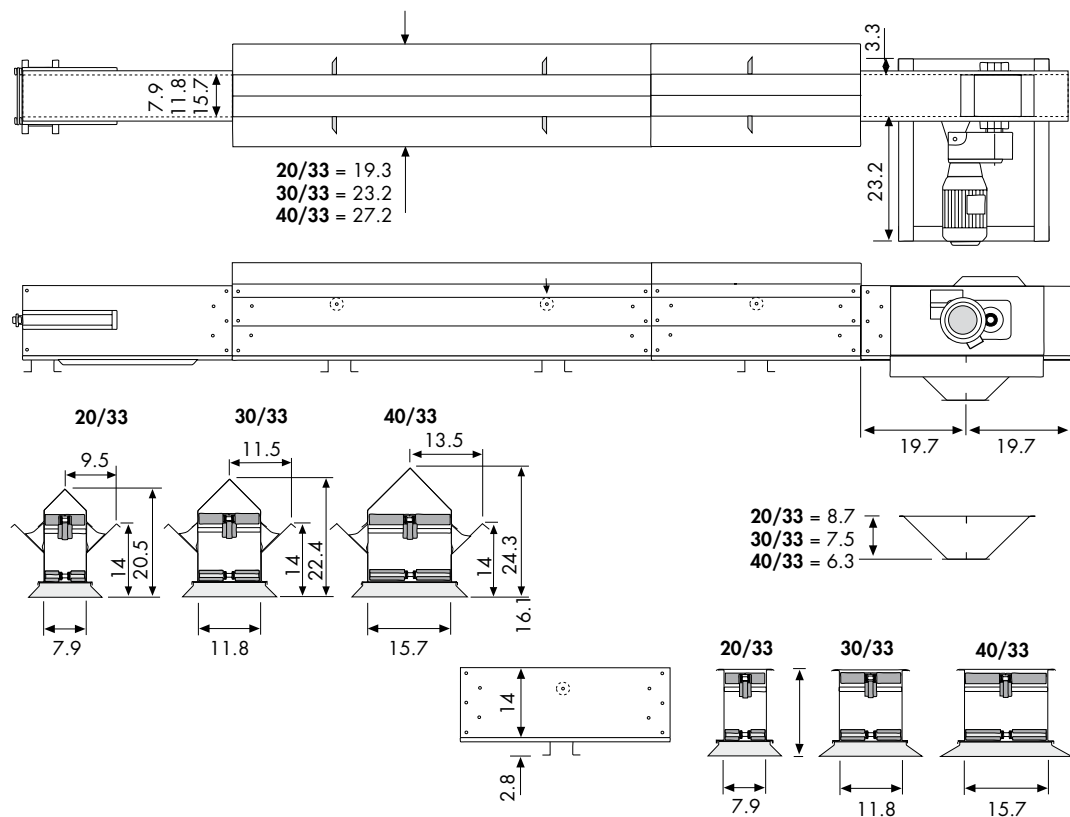
**THE
LEADING
COMPANY**



Self-regulating trench intake section.

KTIFg

DIMENSIONAL DRAWING



All drawings are available in CAD format.

KTIFg TRENCH INTAKE CONVEYOR			20/33	20/33	30/33	30/33	40/33
			40 MTH	60 MTH	80 MTH	100 MTH	120 MTH
Capacity for 750 kg/m ³ (46.8 lb/CF)	MTH		41-45	56-60	76-82	94-100	111-122
Capacity	M ³ /H		55-60	75-80	101-109	125-133	148-163
Capacity	CFH		1942-2119	26482-2825	3566-3848	4414-4696	5225-5756
Capacity	BPH		1561-1703	2129-2270	2866-3093	3548-3775	4200-4626
Speed	RPM		32-35	43-46	38-41	47-50	43-47
Chain speed	FPM		85-93	112-120	100-108	124-132	112-124
Conveyor chain, type			M80				
Pitch/ultimate tensile strength	in/lbf		3.9/17900				
Chain sprocket, teeth	pcs		8				
Flight, material			Steel/Plastic				
Intermediate section, width/height	in		7.9/13.2		11.8/13.2		15.7/13.2
Plate thickness, drive, side plate/bottom plate	ga		6/12				
Plate thickness, tail end/intermediate section, side plate/bottom plate	ga		12/12				
Inlet and outlet hoppers, plate thickness/□ dimension	ga/in		11/□7.1		11/□9.8		11/□11.8
ATEX class (standard equipped)			II 2D/OD				

