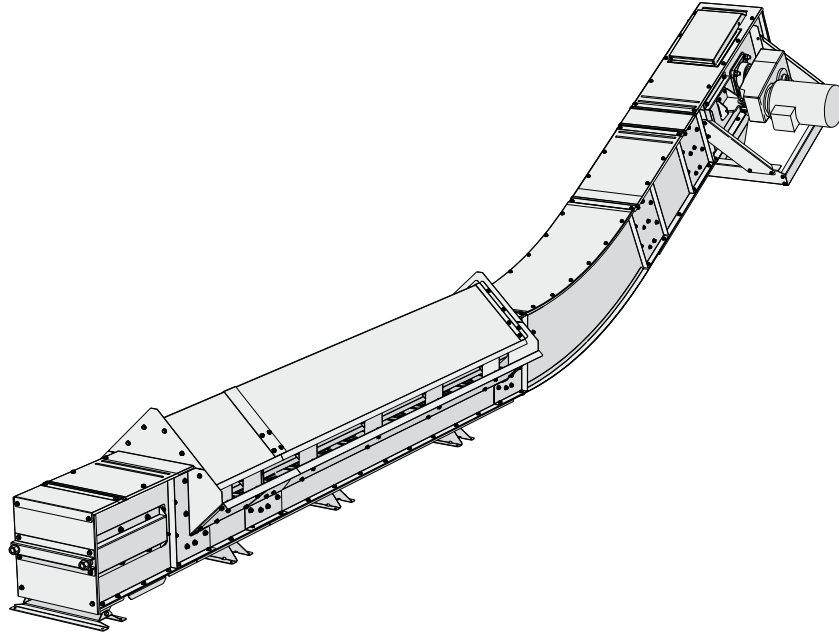




**SKANDIA
ELEVATOR**



Our machines are designed for outdoor use. We only use galvanized steel plate, and join the parts by means of clamp riveting and bolting in order to keep the surface layer intact. Edges are bent down, joints and seams overlap and many parts are embossed in order to prevent water penetration. The most exposed joints are also sealed with rubber strips or silicone. The products in the I-LINE are designed for plants with continuous operation all year round.



KTIG

The trench intake conveyor KTIG is adapted in terms of capacity to transport material from a loading trench to a Skandia elevator. It can be finished with 15°, 30° or 45° incline. The trench intake section is self-regulating, which prevents overfilling.

STANDARD EQUIPMENT:

- › Direct-mounted gearbox motor with support frame
- › Pop up overloading flap/inspection hatch with safety switch
- › Outlet hopper for the drive
- › Self-regulating trench intake sections
- › Chain tensioner with variable end face for extra cleanliness
- › Bottom clean out hatch in tail end
- › Bottom clean-out hatch in bend section
- › Intermediate trays with smooth finger joints
- › Permanently lubricated bearings
- › Chain and flight of steel with flight casing of PE (polyethylene)

ACCESSORIES:

- › Weather cover for gearbox motor
- › Connections, hoppers & valves for different needs



Pop up overloading flap/inspection hatch with safety switch.

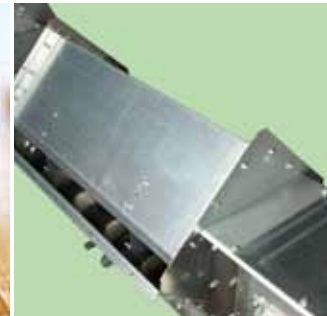


Chain/flight of welded steel with casing of HDPE (high-density polyethylene).

GALVANIZED
ENERGY EFFICIENT
SERVICE FRIENDLY
COMPACT
RELIABLE
EASILY MOUNTED



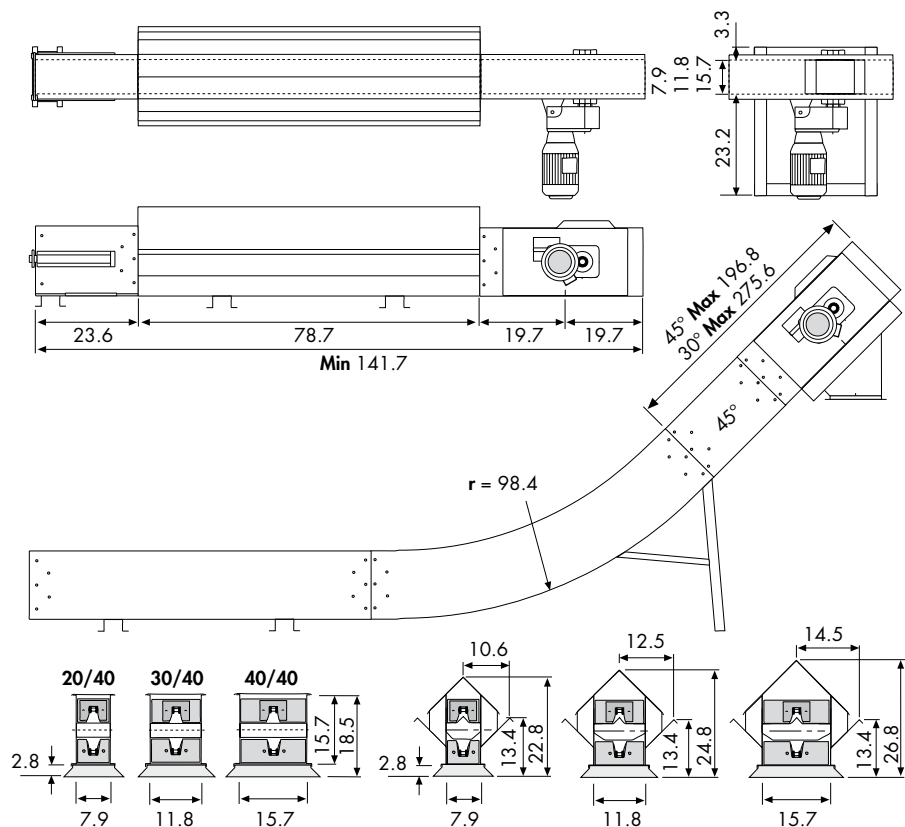
**THE
LEADING
COMPANY**



Self-regulating trench intake section.

KTIG

DIMENSIONAL DRAWING



All drawings are available in CAD format.

KTIG TRENCH INTAKE CONVEYOR

		20/40 40 MTH	20/40 60 MTH	30/40 80 MTH	40/40 100 MTH	40/40 120 MTH
Capacity for 750 kg/m ³ (46.8 lb/CF)	MTH	40-42	54-57	77-83	91-97	113-118
Capacity	M ³ /H	53-56	72-76	103-111	121-129	151-157
Capacity	CFH	1871-2089	2542-2684	3637-3919	4273-4556	5331-5544
Capacity	BPH	1504-1589	2043-2157	2923-3150	3434-3661	4285-4456
Speed	RPM	43-45	58-61	54-58	47-50	58-61
Chain speed	FPM	112-118	152-159	142-152	124-132	167-173
Conveyor chain, type				M80		
Pitch/ultimate tensile strength	in/lbf			3.9/17900		
Chain sprocket, teeth	pcs			8		
Flight, material				Plastic		
Intermediate section, width/height	in	7.9/15.8		11.8/15.8	15.8/15.8	
Plate thickness, drive, side plate/bottom plate	ga			6/12		
Plate thickness, tail end/intermediate section, side plate/bottom plate	ga			14/12		
Inlet and outlet hoppers, plate thickness/□ dimension	ga/in		11/□7.1		11/□9.8	11/□11.8
ATEX class (standard equipped)				II 2D/OD		

