



**SKANDIA
ELEVATOR**



Our machines are designed for outdoor use. We only use galvanized steel plate, and join the parts by means of clamp riveting and bolting in order to keep the surface layer intact. Edges are bent down, joints and seams overlap and many parts are embossed in order to prevent water penetration. The most exposed joints are also sealed with rubber strips or silicone. The products in the H-LINE are designed for plants with intense operation all year round.

SEH 63/28-33

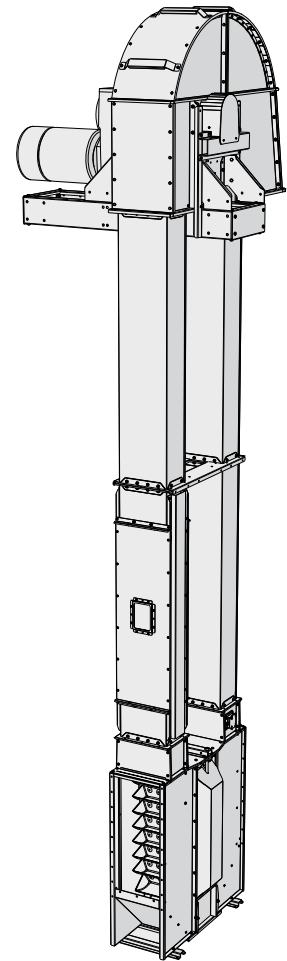
The SEH 63/28-33 belt & bucket elevator is adapted in terms of capacity to lift material from a Skandia trench intake/bottom conveyor to a Skandia top conveyor. It can be fed on the upward or downward side with the same capacity.

STANDARD EQUIPMENT:

- › Direct-mounted gearbox motor
- › Back stop & elevator switch
- › Inductive belt alignment switch
- › Plastic wearing surfaces inside the elevator hood and outlet nose
- › Removable split elevator hood
- › Self-cleaning slatted pulley in head & boot
- › Cambered slatted pulley and belt alignment adjuster in boot
- › Belt tensioning device in boot
- › Leg with two service doors, one with sight glass
- › Service door in leg & clean out hatch on both sides in the boot
- › Sealing plate for an inlet opening
- › Antistatic bucket belt and plastic buckets

ACCESSORIES:

- › Weather cover for gearbox motor
- › Explosion relief panels
- › Connections & inlet hoppers
- › Leg with two service doors, one with sight glass
- › Elevator hood with aspiration connection.
- › Service platform, ladder with safety hoops & rest platform (up to and incl. 37 kW)
- › Oil, grease and temperature-resistant bucket belt



Inductive belt alignment switch.



Antistatic bucket belt with steel buckets.

**GALVANISED
ENERGY EFFICIENT
SERVICE FRIENDLY
COMPACT
RELIABLE
EASILY MOUNTED**

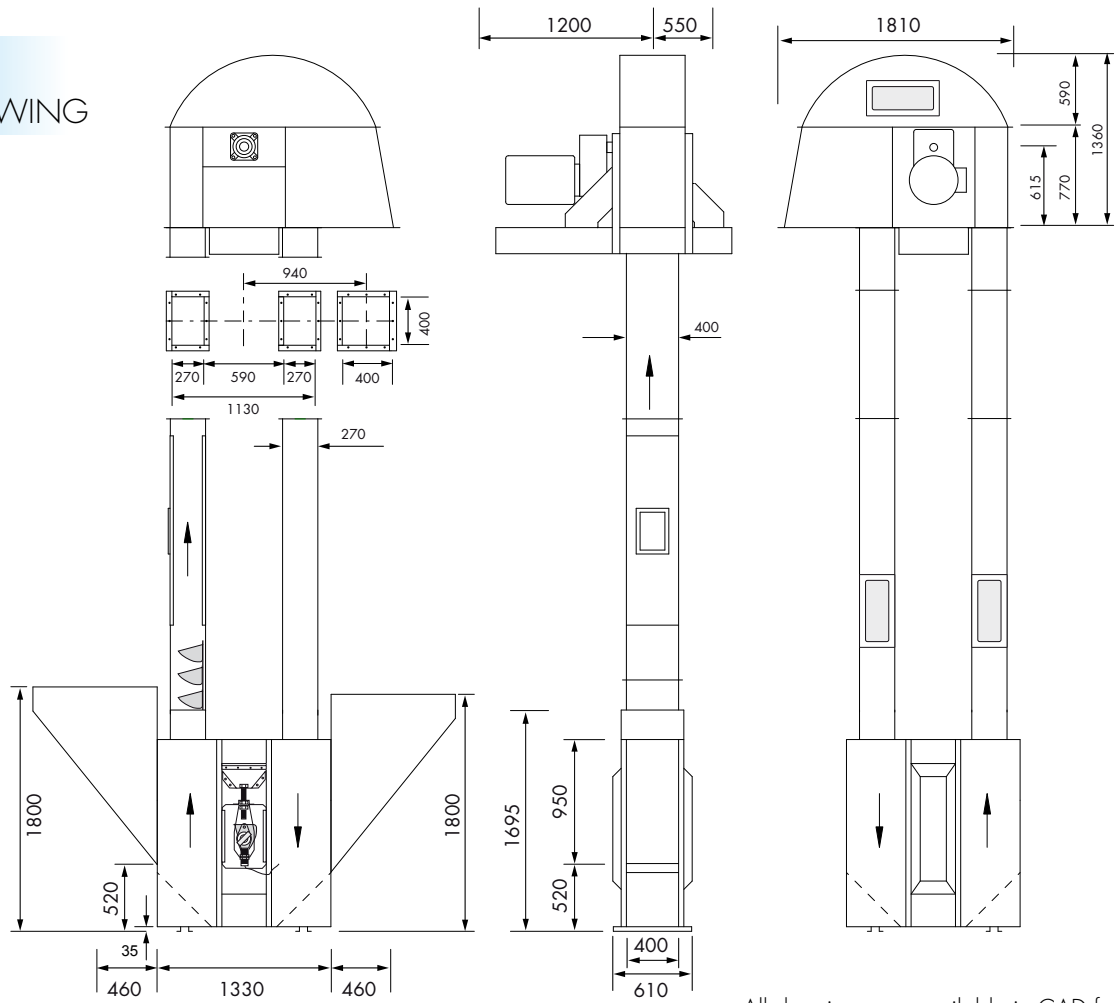


Belt tension in boot & speed monitor.

**THE
LEADING
COMPANY**

SEH 63/28-33

DIMENSIONAL DRAWING



All drawings are available in CAD format.

SEH BELT & BUCKET ELEVATOR

63/28-33 t/h

		200 _{MTH}	250 _{MTH}	300 _{MTH}
Capacity for 750 kg/m ³ (46.8 lb/CF)	MTH	200	250	300
Capacity	M ³ /H	266	334	400
Capacity	CFH	9392	11794	14124
Capacity	BPH	7549	9479	11352
Speed/Belt speed (Nom.)		95 RPM/610 FPM		
Slatted pulley diameter	in	24.8		
Max buckets/ft belt	pcs	2.7	2.2	2.2
Buckets/ft belt	pcs	2.4	1.6	2.0
Belt width	in	11.8	13.8	13.8
Belt type/standard		EP 630/4, 800/5, 1000/6 (Antistatic)		
Leg, width/depth	in	15.8/10.6		
Plate thickness, head/boot	ga	9		
Plate thickness, legs	ga	14		
ATEX class (standard equipment)		II 2D/OD		

