

Our machines are designed for outdoor use. We only use galvanized steel plate, and join the parts by means of clamp riveting and bolting in order to keep the surface layer intact. Edges are bent down, joints and seams overlap and many parts are embossed in order to prevent water penetration. The most exposed joints are also sealed with rubber strips or silicone. The products in the H-LINE are designed for plants with intense operation all year round.

## SEH 80/28-33

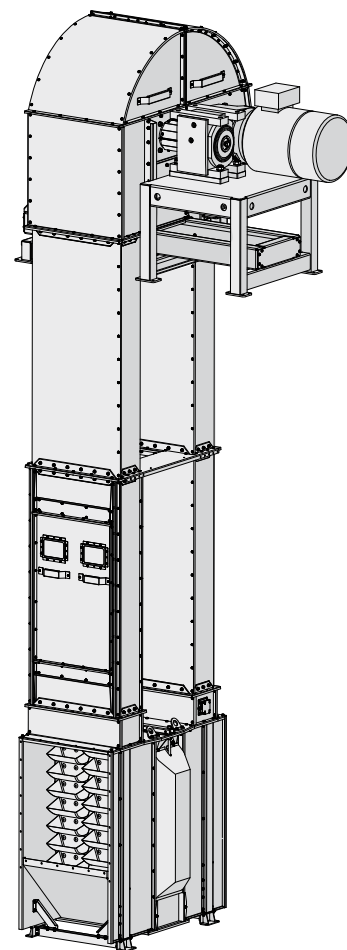
The SEH 80/28-33 belt & bucket elevator is adapted in terms of capacity to lift material from a Skandia trench intake/bottom conveyor to a Skandia top conveyor. It can be fed on the upward or downward side with the same capacity.

### STANDARD EQUIPMENT:

- › Direct-mounted gearbox motor
- › Back stop & elevator switch
- › Inductive belt alignment switch
- › Plastic wearing surfaces inside the elevator hood and outlet nose
- › Removable split elevator hood
- › Self-cleaning slatted pulley in boot
- › Slatted pulley with material-repellent friction rubber in head
- › Cambered slatted pulley and belt alignment adjuster in boot
- › Belt tensioning device in boot
- › Leg with two service doors, one with sight glass
- › Service door in leg and on both sides of head
- › Clean-out hatch in both sides of boot
- › Sealing plate for an inlet opening
- › Antistatic bucket belt and plastic buckets

### ACCESSORIES:

- › Explosion relief panels
- › Service platform in two different variants, ladder safety hoops & rest platform
- › Elevator hood with aspiration connection
- › Oil, grease and temperature-resistant bucket belt



Inductive belt alignment switch.



Elevator head.

**GALVANIZED  
ENERGY EFFICIENT  
SERVICE FRIENDLY  
COMPACT  
RELIABLE  
EASILY MOUNTED**



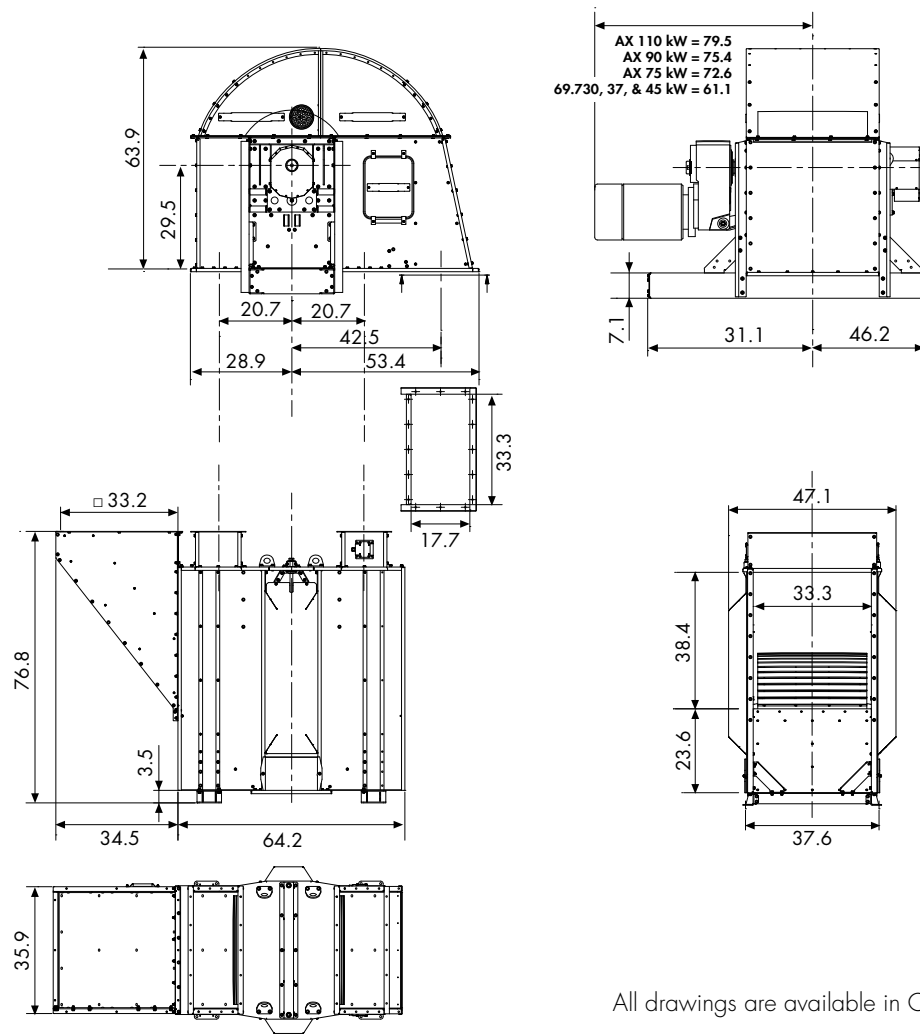
**THE  
LEADING  
COMPANY**



Belt tension in boot & speed monitor.

# SEH 80/28-33

## DIMENSIONAL DRAWING



All drawings are available in CAD format.

### SEH BELT & BUCKET ELEVATOR

### 80/28-33 t/h

|   |                   | 400 MTH                              | 500 MTH | 600 MTH |
|---|-------------------|--------------------------------------|---------|---------|
| Capacity for 750 kg/m <sup>3</sup> (46.8 lb/CF) | MTH               | 400                                  | 500     | 600     |
| Capacity  | M <sup>3</sup> /H | 533                                  | 667     | 800     |
| Capacity  | CFH               | 18820                                | 23552   | 28248   |
| Capacity  | BPH               | 15127                                | 18929   | 22704   |
| Speed/Belt speed (Nom.)                         |                   | 72 RPM/590 FPM                       |         |         |
| Slatted pulley diameter                         | in                | 31.5                                 |         |         |
| Max buckets/ft belt                             | pcs               | 5.5                                  | 3.4     | 3.4     |
| Buckets/ft belt                                 | pcs               | 5.2                                  | 3.4     | 4.1     |
| Belt width                                      | in                | 23.6                                 | 27.6    | 27.6    |
| Belt type/standard                              |                   | EP 630/5, 800/5, 1000/5 (Antistatic) |         |         |
| Leg, width/depth                                | in                | 33.5/12.18                           |         |         |
| Plate thickness, head/boot                      | ga                | 9                                    |         |         |
| Plate thickness, legs                           | ga                | 12                                   |         |         |
| ATEX class (standard equipment)                 |                   | II 2D/OD                             |         |         |

